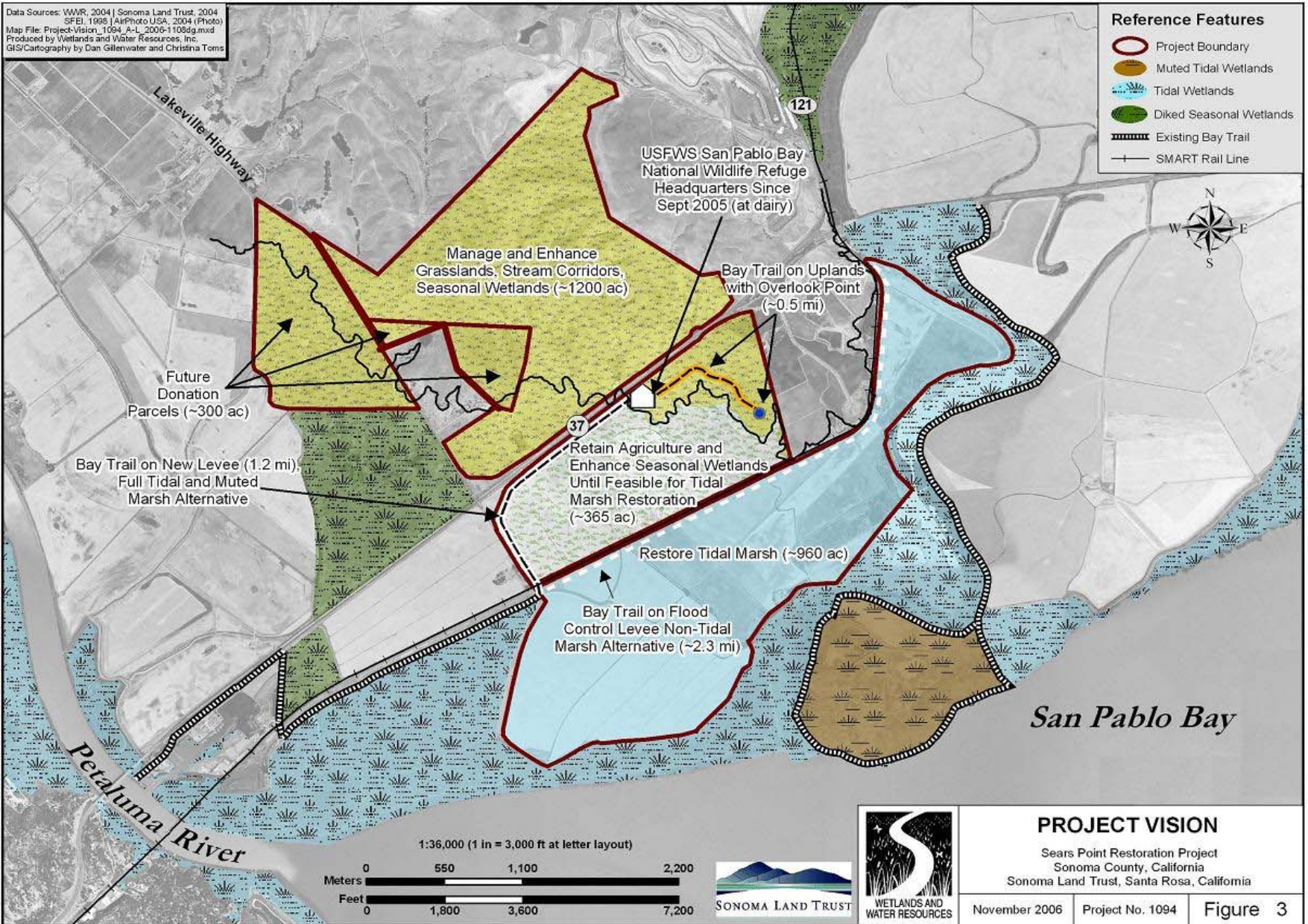


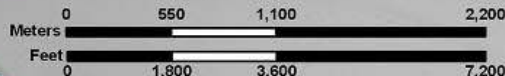
Data Sources: WWR, 2004 | Sonoma Land Trust, 2004
 SFEI, 1998 | AirPhoto USA, 2004 (Photo)
 Map File: Project-Vision_1094_A-L_2006-1108dg.mxd
 Produced by Wetlands and Water Resources, Inc.
 GIS/ Cartography by Dan Gillenwater and Christina Toms

Reference Features

-  Project Boundary
-  Muted Tidal Wetlands
-  Tidal Wetlands
-  Diked Seasonal Wetlands
-  Existing Bay Trail
-  SMART Rail Line



1:36,000 (1 in = 3,000 ft at letter layout)



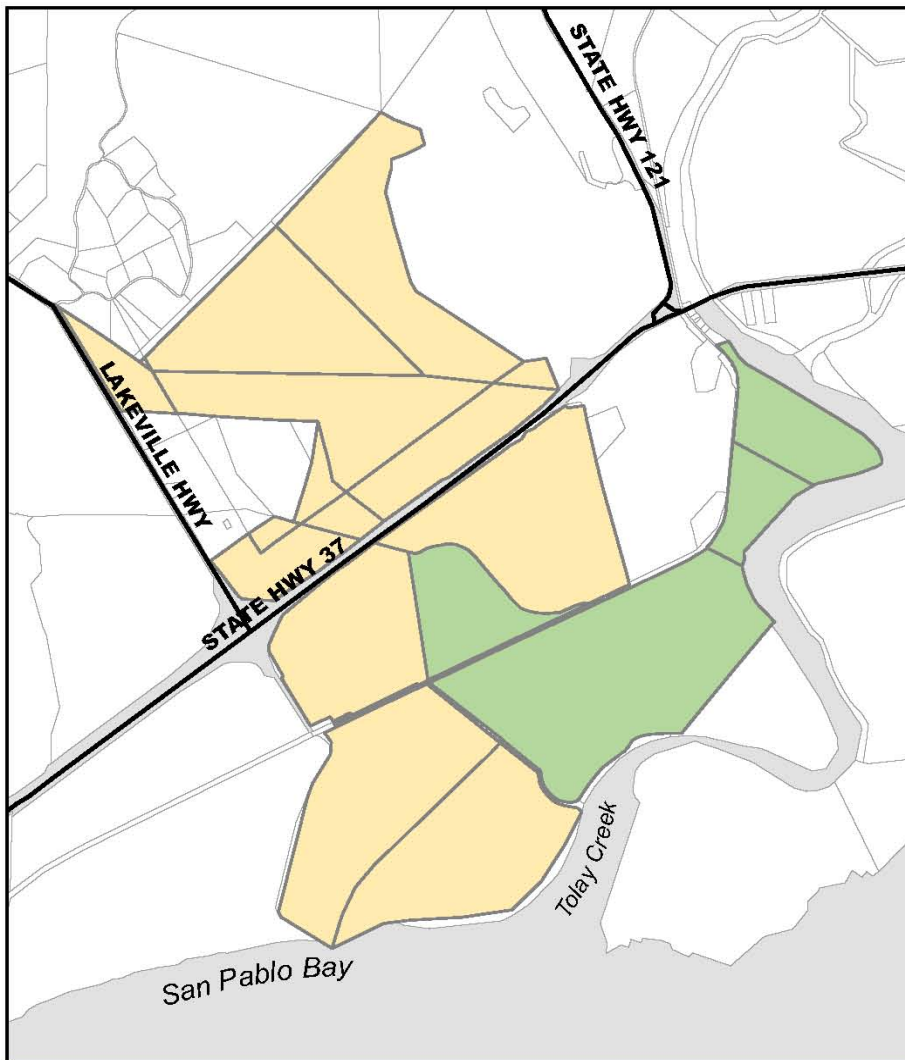
PROJECT VISION

Sears Point Restoration Project
 Sonoma County, California
 Sonoma Land Trust, Santa Rosa, California

November 2006

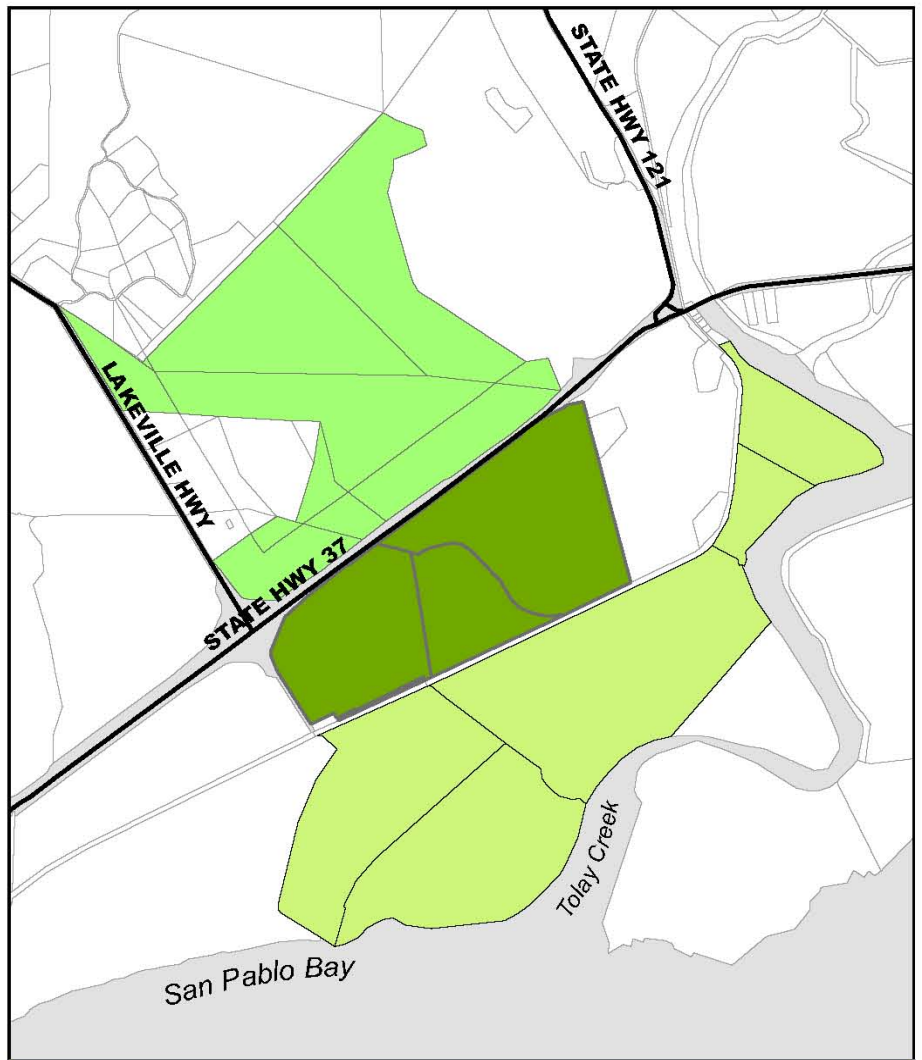
Project No. 1094

Figure 3



Acquisition Restrictions

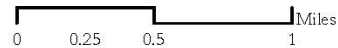
- NPJV: Offer to Dedicate to State
- Dickson Ranch: SCAPOSD Conservation Easement
- Assessor's Parcels
- Major Roads



Proposed Disposition Plan

- Disposition_USFWS Refuge
- Disposition_DFG
- Disposition_SLT
- Assessor's Parcels
- Major Roads

Sears Point Restoration Project



Parcel boundaries are approximate only.
 Source: County of Sonoma Enterprise GIS Database 2004.
 Map produced by SLT 9/08.