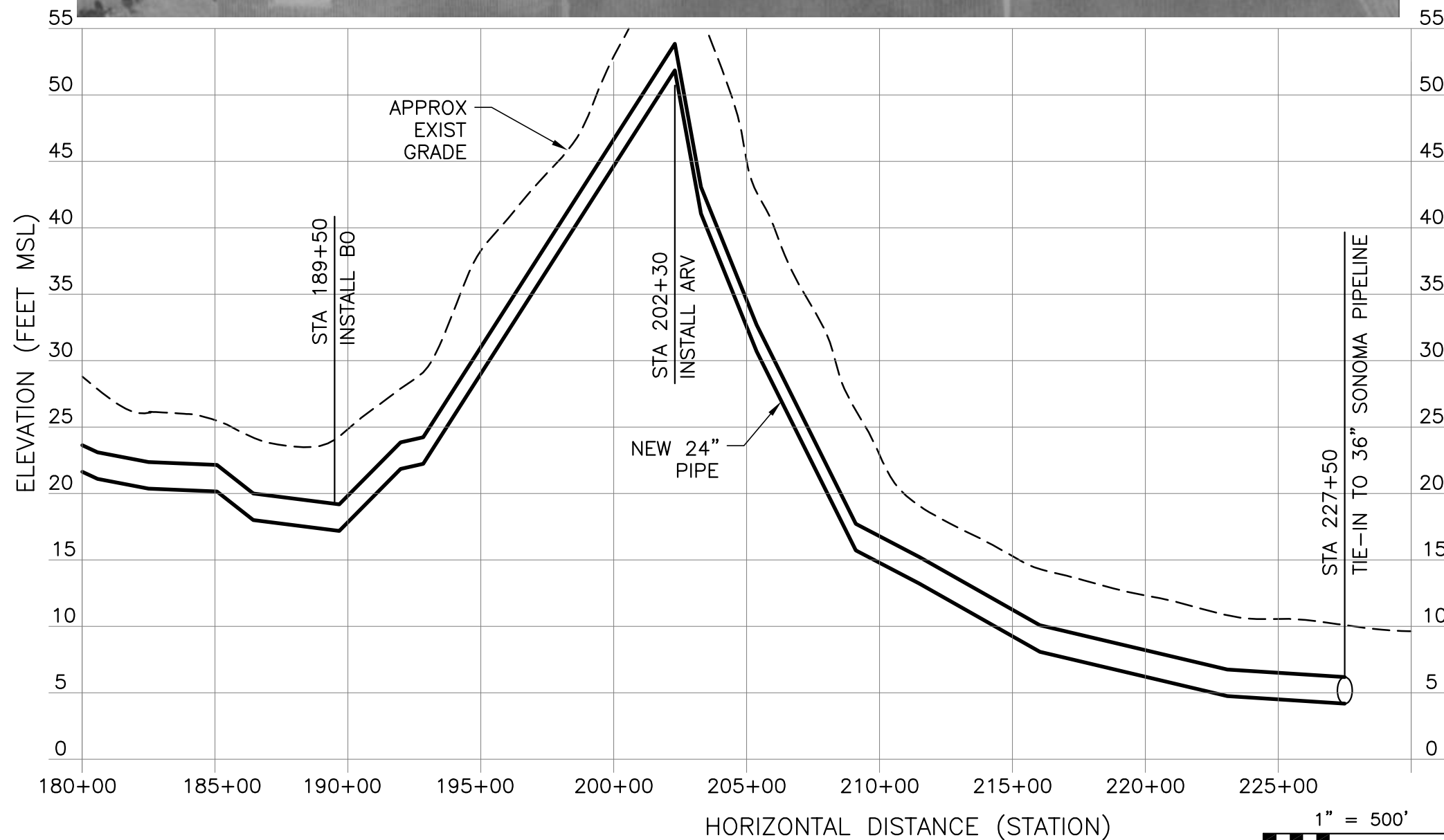
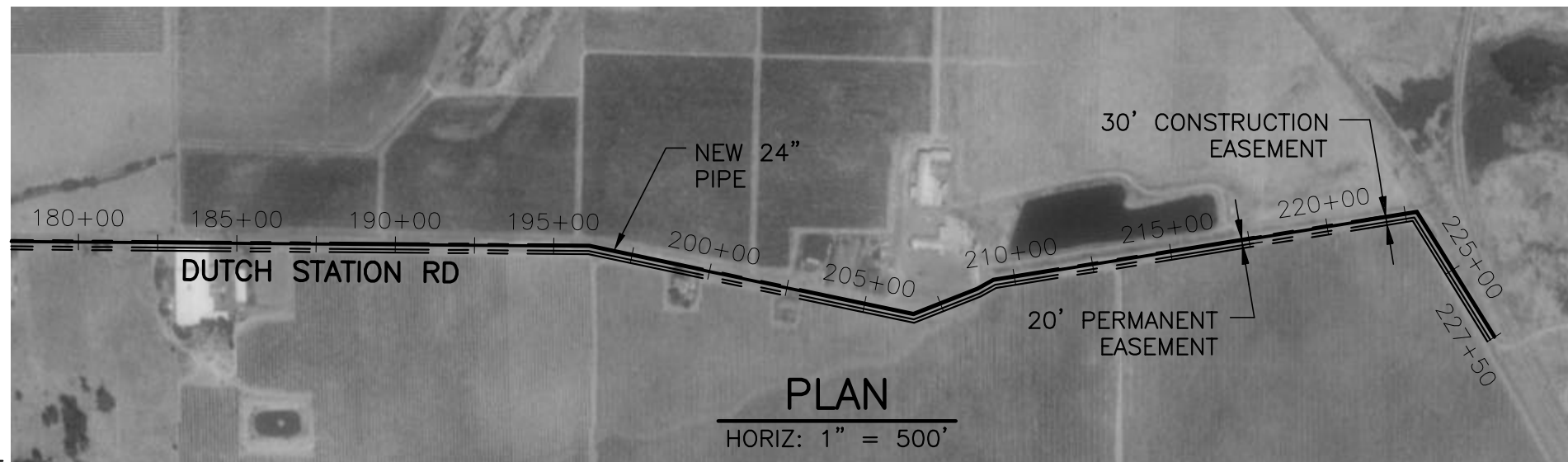


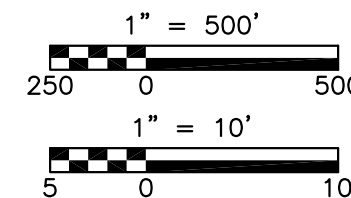
\\wfsrv1\cadd\ACAD2000\8131\34877\water-delivery\_03\NCSO-PIPELINE-WST-004 01/30/03 09:46 talbotwk XREFS: NCSO-PIPELINE-FLOO, 1117BRDR



**NOTES:**

1. ALL STATIONS ARE APPROXIMATE.
2. EXISTING SURFACE TOPOGRAPHY OBTAINED FROM USGS MAPS.

**PROFILE**  
 HORIZ: 1" = 500'  
 VERT: 1" = 10'



Sonoma County Water Agency	
NAPA-SONOMA SALT MARSH RESTORATION PROPOSED NAPA PIPELINE	
DATE: January 2003	SHEET: 4 OF 5