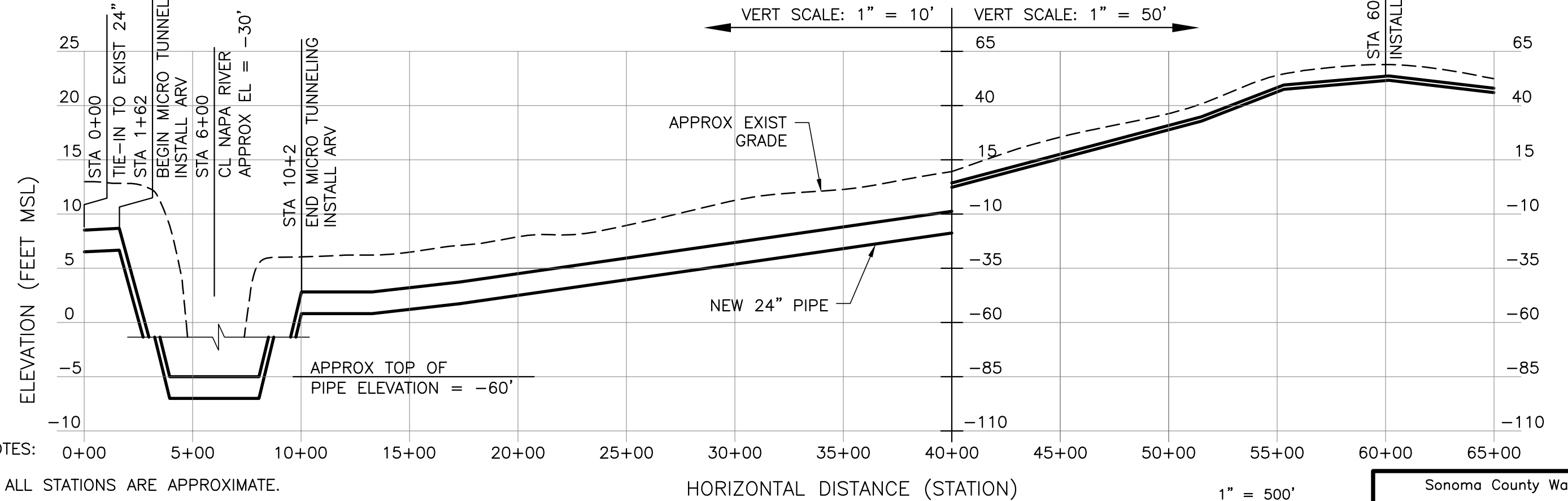
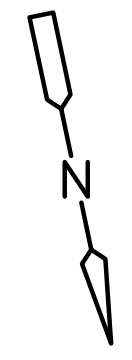
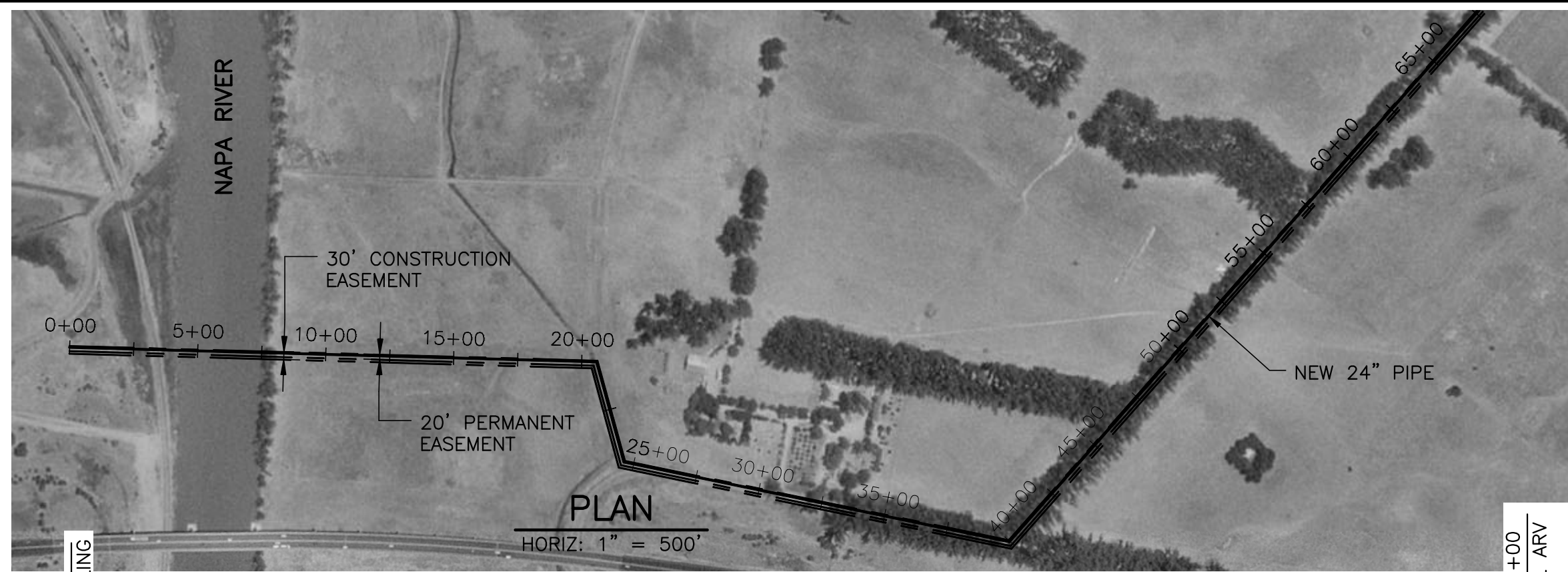
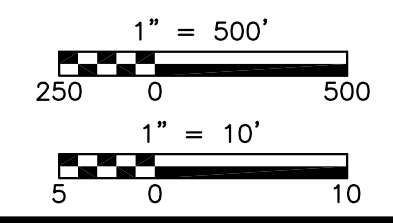


\\wfsrv1\csc\ACAD2000\8131\34877\water-delivery\_03\NCSD-PIPELINE-WST-001 01/30/03 09:27 talbotwk XREFS: NCSD-PIPELINE-FL000, 1117BRDR



- NOTES:
1. ALL STATIONS ARE APPROXIMATE.
  2. EXISTING SURFACE TOPOGRAPHY OBTAINED FROM USGS MAPS.
  3. VERTICAL SCALE IS 1" = 10' FROM STA 0+00 TO STA 40+00 AND 1" = 50' FROM STA 40+00 TO STA 65+00.



Sonoma County Water Agency  
**NAPA-SONOMA  
 SALT MARSH RESTORATION  
 PROPOSED NAPA PIPELINE**

DATE: January 2003      SHEET: 1 OF 5