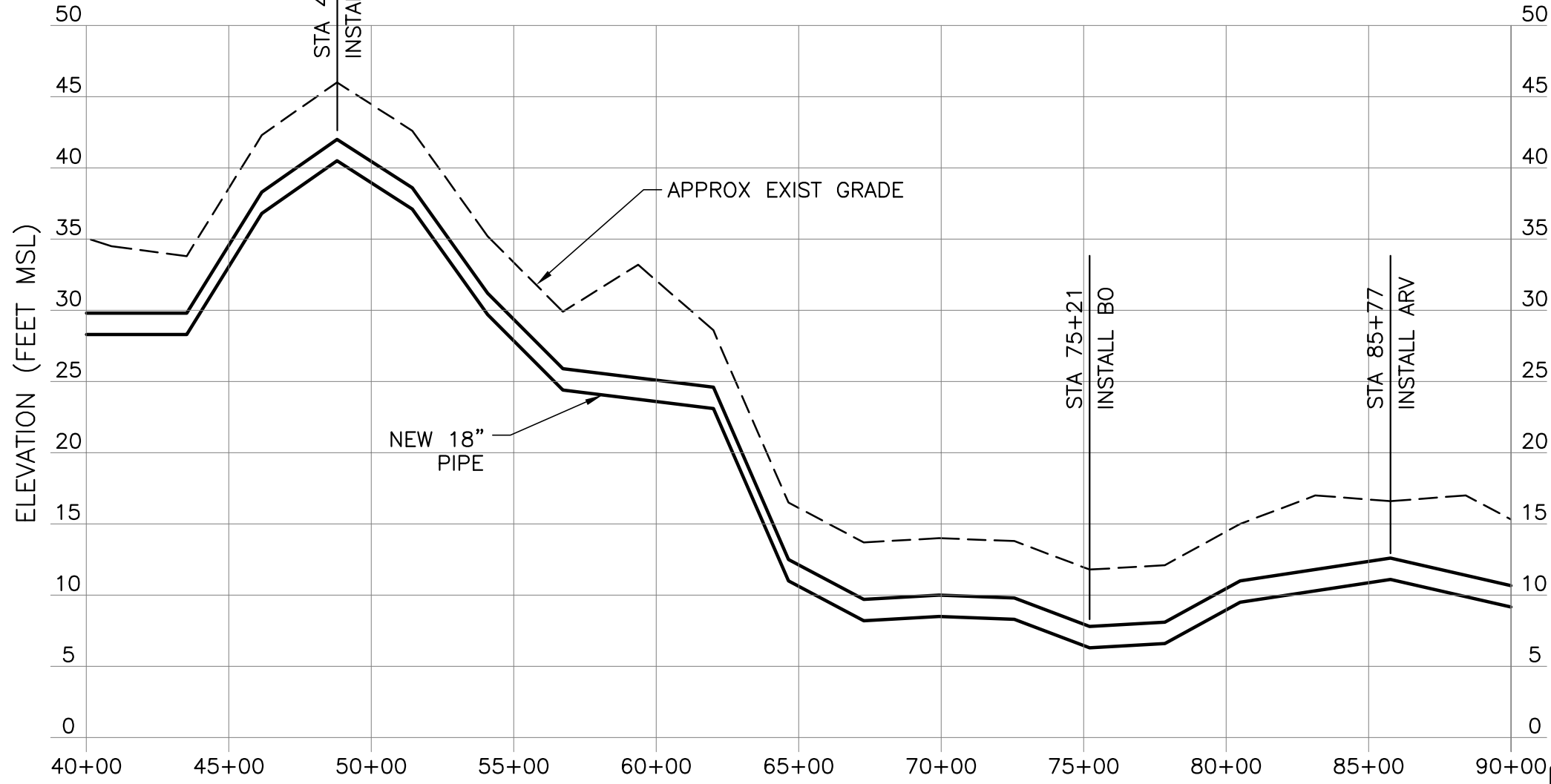
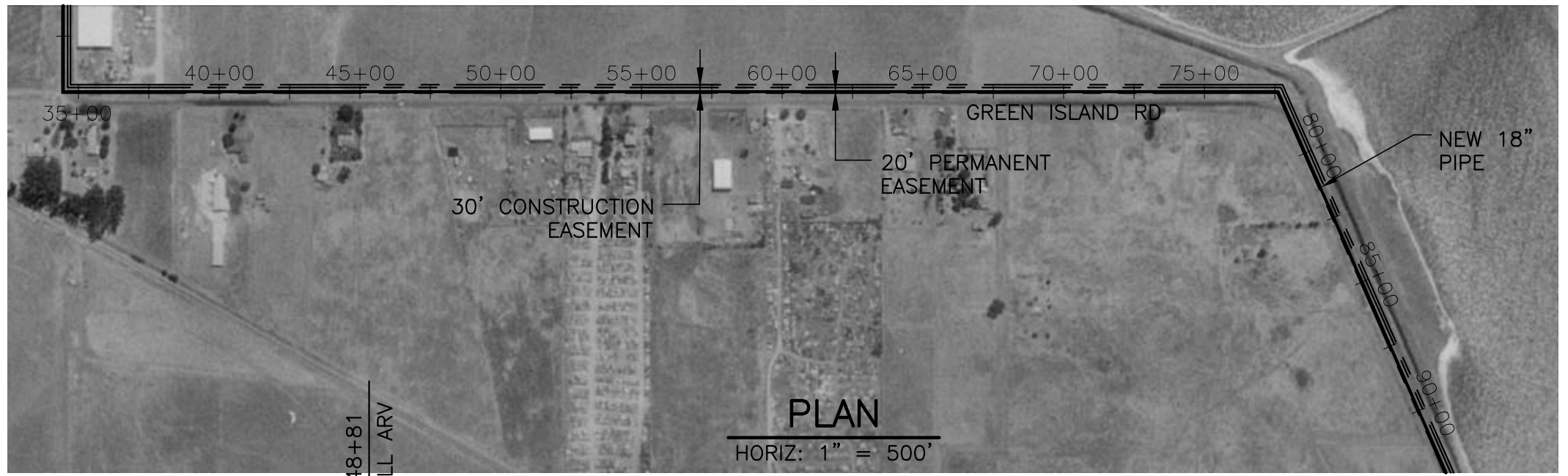
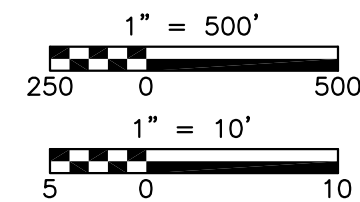


\\wiser1\cadd\ACAD2000\8131\34877\American Canyon\fig\ACSD-PIPELINE-002 03/05/03 11:33 talbotwk XREES 1117BRDR ACSD-PIPELINE-PL000



NOTES:

- 1. ALL STATIONS ARE APPROXIMATE.
- 2. EXISTING SURFACE TOPOGRAPHY OBTAINED FROM USGS MAPS.



Sonoma County Water Agency	
NAPA-SONOMA SALT MARSH RESTORATION PROPOSED AMERICAN CANYON PIPELINE	
DATE: March 2003	SHEET: 2 OF 5